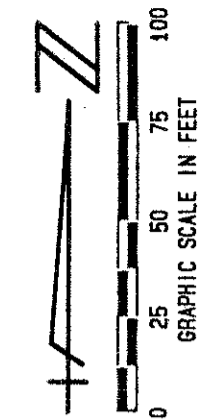


# ADDISON RESERVE PLAT ONE

PART OF THE GLENEAGLES/POLO CLUB WEST P. U. D.  
 SITUATE IN SECTIONS 27 AND 28, TOWNSHIP 46 SOUTH, RANGE 42 EAST  
 PALM BEACH COUNTY, FLORIDA  
 FEBRUARY, 1995 SHEET 6 OF 7

# 149

STATE OF FLORIDA  
 COUNTY OF PALM BEACH  
 THIS PLAT WAS FILED FOR  
 RECORD \_\_\_\_\_ DAY OF \_\_\_\_\_  
 AD, 1995 AND DULY RECORDED  
 IN PLAT BOOK \_\_\_\_\_ ON PAGES \_\_\_\_\_  
 AND \_\_\_\_\_  
 DOROTHY H. WILKEN, CLERK  
 BY: \_\_\_\_\_, D. C.

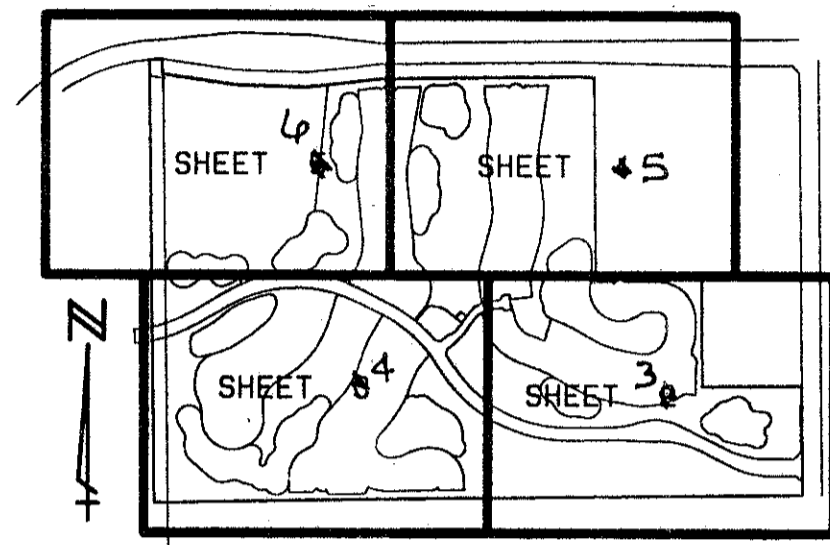


NE CORNER NW 1/4  
 SECT. 27-46-42  
 PK FOUND

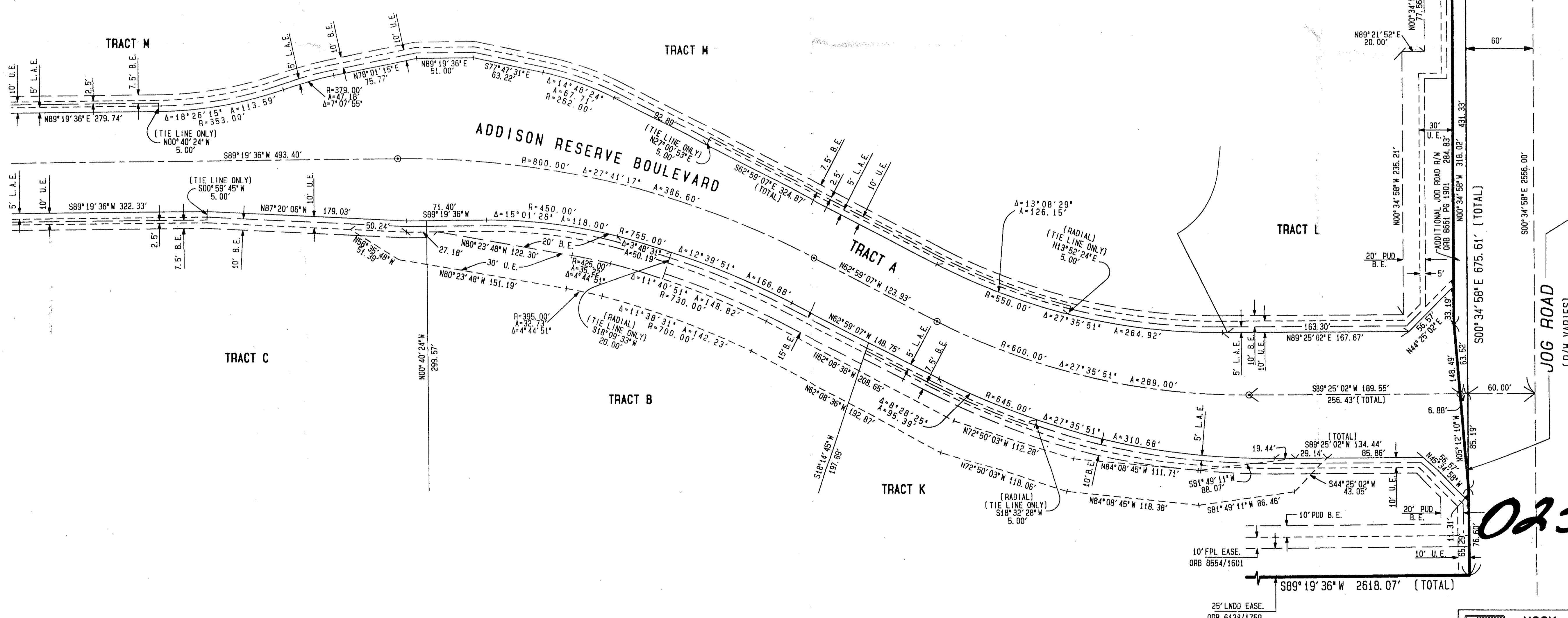
### LEGEND:

- L. M. D. LAKE NORTH DRAINAGE DISTRICT
- FPL FLORIDA POWER & LIGHT
- ORB OFFICIAL RECORD BOOK
- PBCD PALM BEACH COUNTY
- PRM PERMANENT REFERENCE MONUMENT
- P. B. PLAT BOOK
- Pp. PAGES
- PG. PAGE
- U. E. UTILITY EASEMENT
- D. E. DRAINAGE EASEMENT
- A. E. ACCESS EASEMENT AND MAINTENANCE EASEMENT
- TWP TOWNSHIP
- RGE RANGE
- (NR) NON RADIAL
- C/L CENTERLINE
- PERMANENT CONTROL POINT
- PERMANENT REFERENCE MONUMENT
- SET PLS. 4763
- PERMANENT REFERENCE MONUMENT FOUND
- L. M. A. E. LAKE MAINTENANCE ACCESS EASEMENT
- L. M. E. LAKE MAINTENANCE EASEMENT
- R/W RIGHT OF WAY
- EASEMENT
- PUD PLANNED UNIT DEVELOPMENT
- B. E. BUFFER EASEMENT
- L. A. E. LIMITED ACCESS EASEMENT

ALL DISTANCES ARE GROUND  
 SCALE FACTOR = 1.0000242



SHEET LOCATION MAP  
 NOT TO SCALE



*PET. 80-215H  
 5/3/3/K*

*GLENEAGLES/POLO CLUB WEST PUD*

JOG RD R/W  
 ORB 8661 PG 1901  
 ORB 1366 PG 68  
 ORB 5873 PG 1285  
 ORB 1254 PG 412  
 ORB 5833 PG 995

UNPLATTED

*0230-013*

*75/149*

SUBDIVISION Addison Reserve Plat One  
 BOOK 75 PAGE 149  
 FLOOD ZONE B FLOOD MAP # 215A  
 QUAD # 52.37 ZONING RB  
 SE 80-215 ZIP CODE 33416  
 PUD NAME GLENEAGLES/POLO CLUB WEST PUD

*TAZ-477*